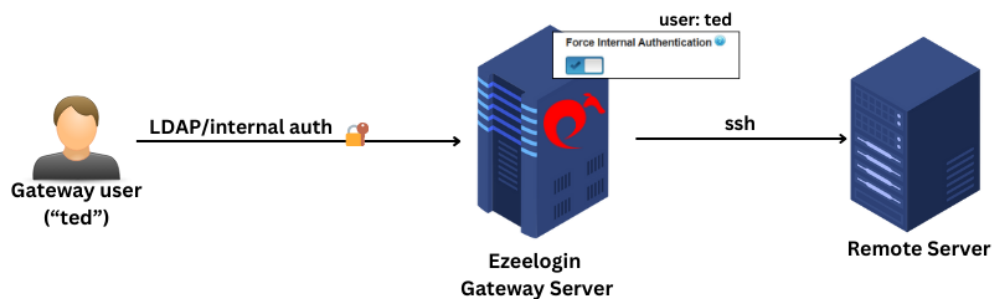


Configure internal authentication for gateway Users while ldap authentication is enabled globally

763 Rakhi February 27, 2025 [Features & Functionalities](#) 128

How to enable internal authentication for a specific gateway users while LDAP authentication is enabled globally ?

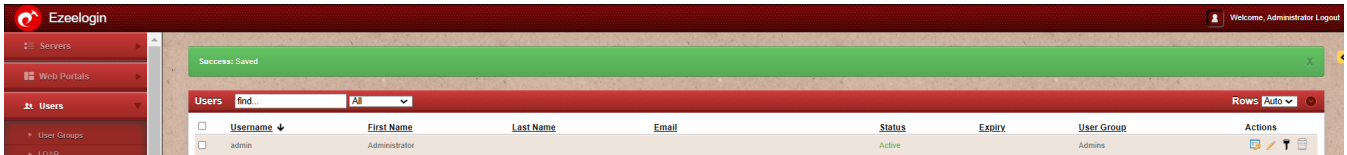
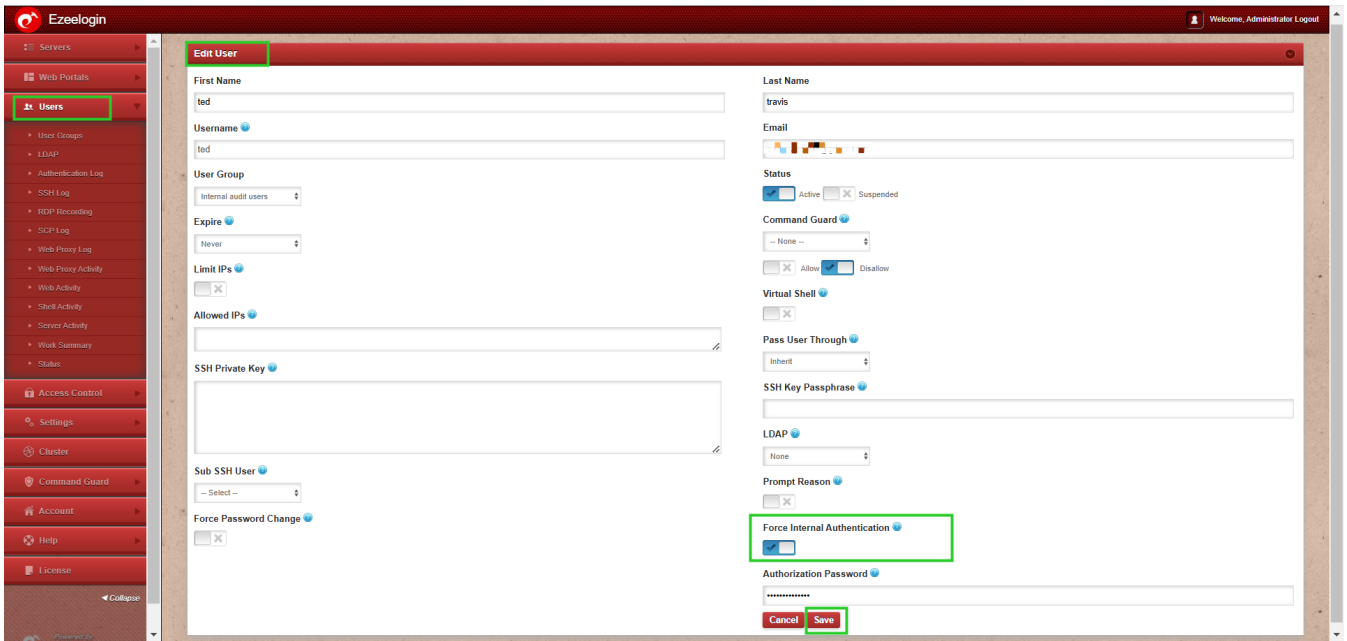
Overview: This article offers a comprehensive guide on enabling internal authentication for specific gateway users, even with LDAP authentication active globally in Ezeelogin.



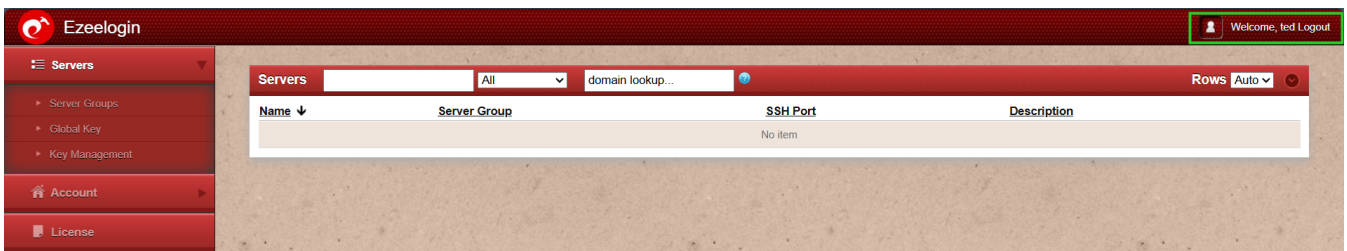
In an environment where LDAP authentication is implemented for centralized user management, there may be scenarios where certain users—such as external vendors or staff—need to bypass LDAP authentication and use internal authentication. Ezeelogin addresses this need with the Force Internal Authentication feature, allowing designated users (e.g., user **'ted'**) to log in using internal authentication while LDAP authentication remains active for others.

Follow below steps to enable internal authentication for specific gateway users, even with LDAP authentication active in Ezeelogin

Step 1: To authenticate a gateway user through internal authentication in the web GUI, enable the '**Force Internal Authentication**' parameter. This can be done either by creating a user or by editing an existing user.



Step 2: Once the 'Force Internal Authentication' parameter is enabled, the gateway user will be able to successfully log in to the web panel GUI using internal authentication.



This feature is available from **Ezeelogin version 7.40.0**. To update your existing Ezeelogin to the latest version, refer to this article: [update](#)

Related Articles:

[Could not authenticate with any ldap servers.](#)

[Switch ldap authentication to internal authentication.](#)

Online URL:

<https://www.ezeelogin.com/kb/article/configure-internal-authentication-for-gateway-users-while-ldap->

[authentication-is-enabled-globally-763.html](#)