

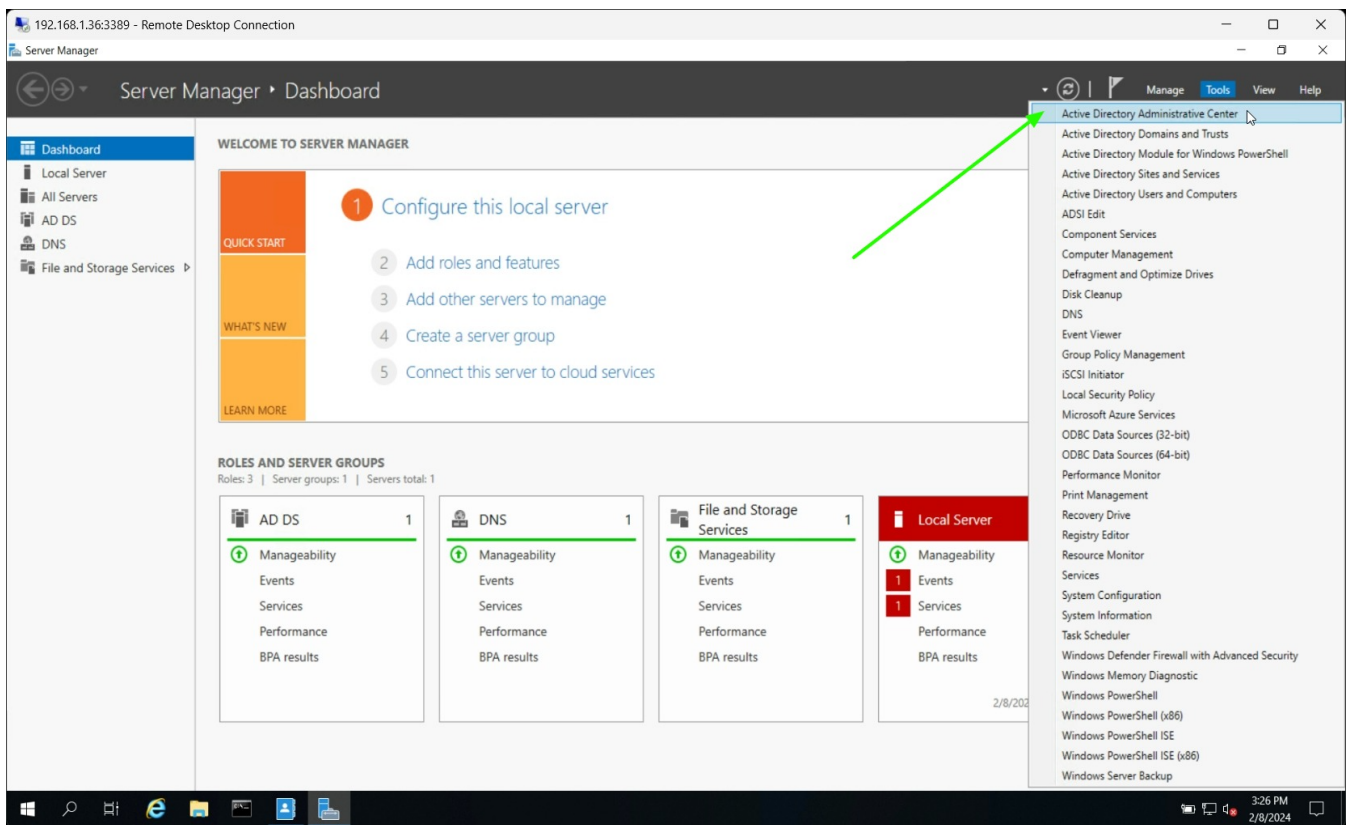
Find base DN and bind RDN from Windows server

676 Nesvin KN February 8, 2024 [General](#) 1331

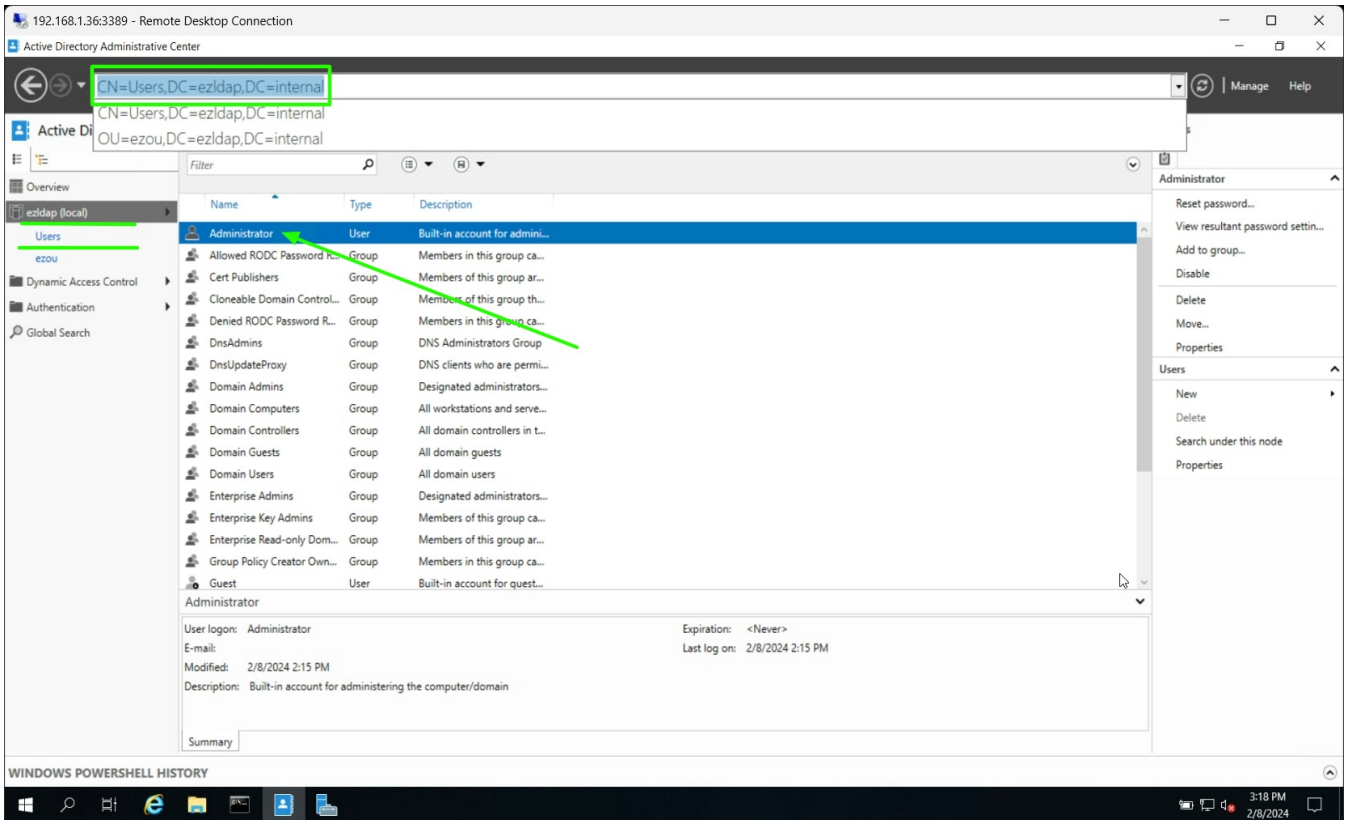
How to find base DN and bind RDN from **Windows Server 19?**

This will help the users to integrate Windows Active Directory server to Ezeelogin.

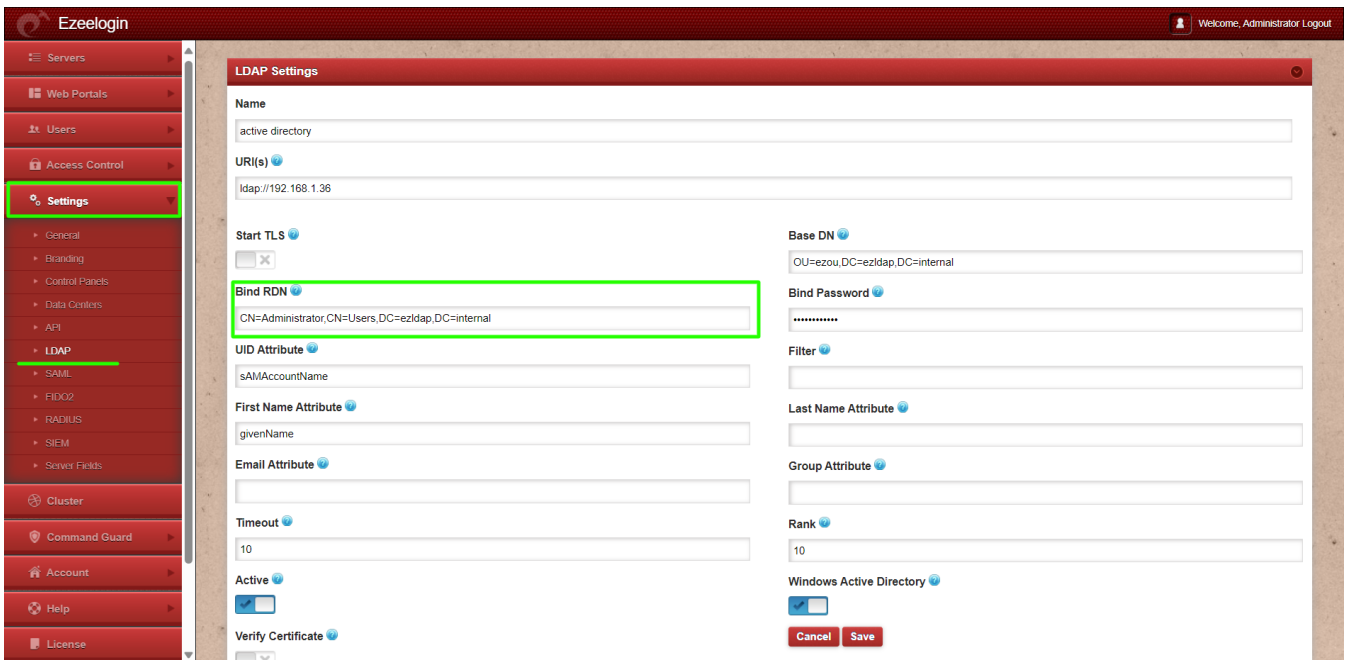
1. Login to Windows server -> **Server Manager** -> **Tools** -> **Active Directory Administrative Center**.



2. Navigate to **base group** -> **Users** -> click on **Administrator**. Copy the distinguish name and paste in LDAP settings of GUI.

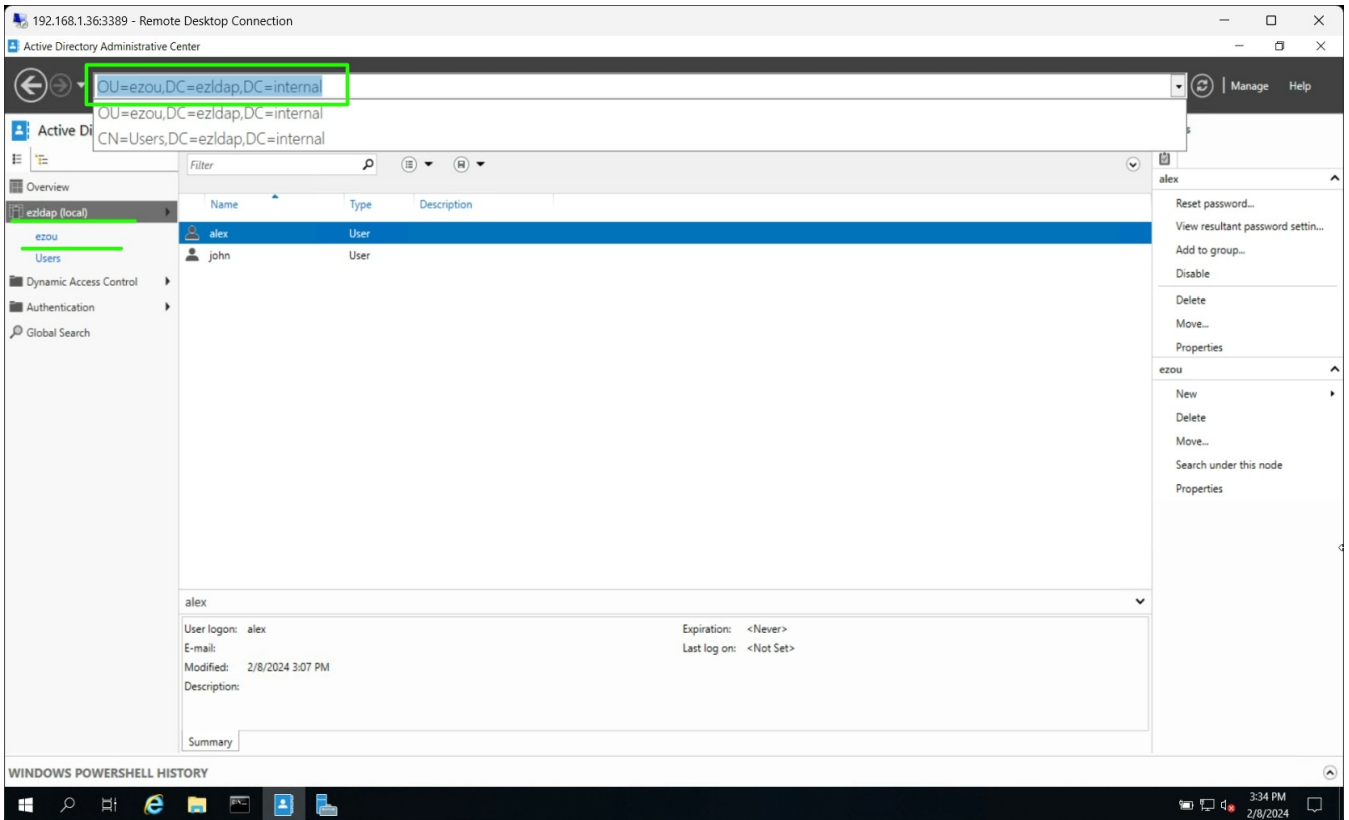


Paste the distinguish name with **CN=Administrator** in **Bind RDN** field LDAP settings in Ezeelogin GUI.

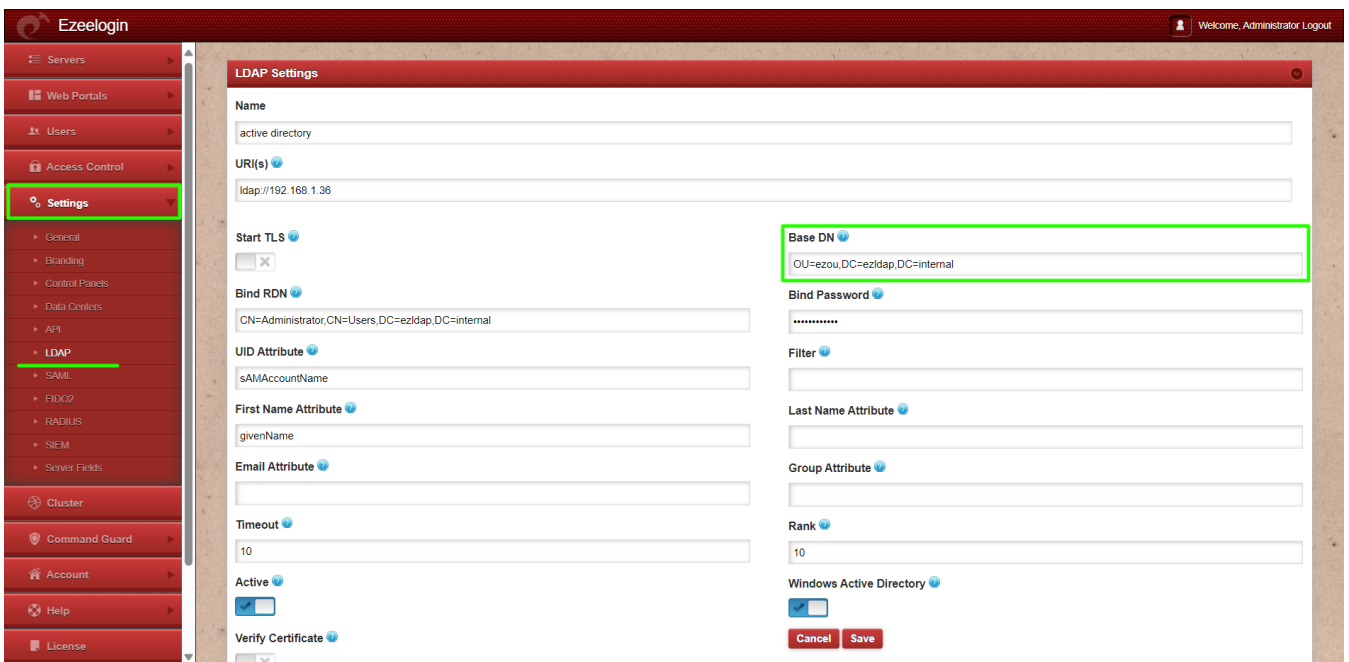


Bind password will be the password of the username specified in Bind RDN field.

3. Click on the **organizational unit** and copy the distinguish name.



Paste the distinguish name in **Base DN** field and paste in LDAP settings in Ezeelogin GUI.



Online URL:

<https://www.ezeelogin.com/kb/article/find-base-dn-and-bind-rdn-from-windows-server-676.html>