

Add AD as LDAP with non-administrator user

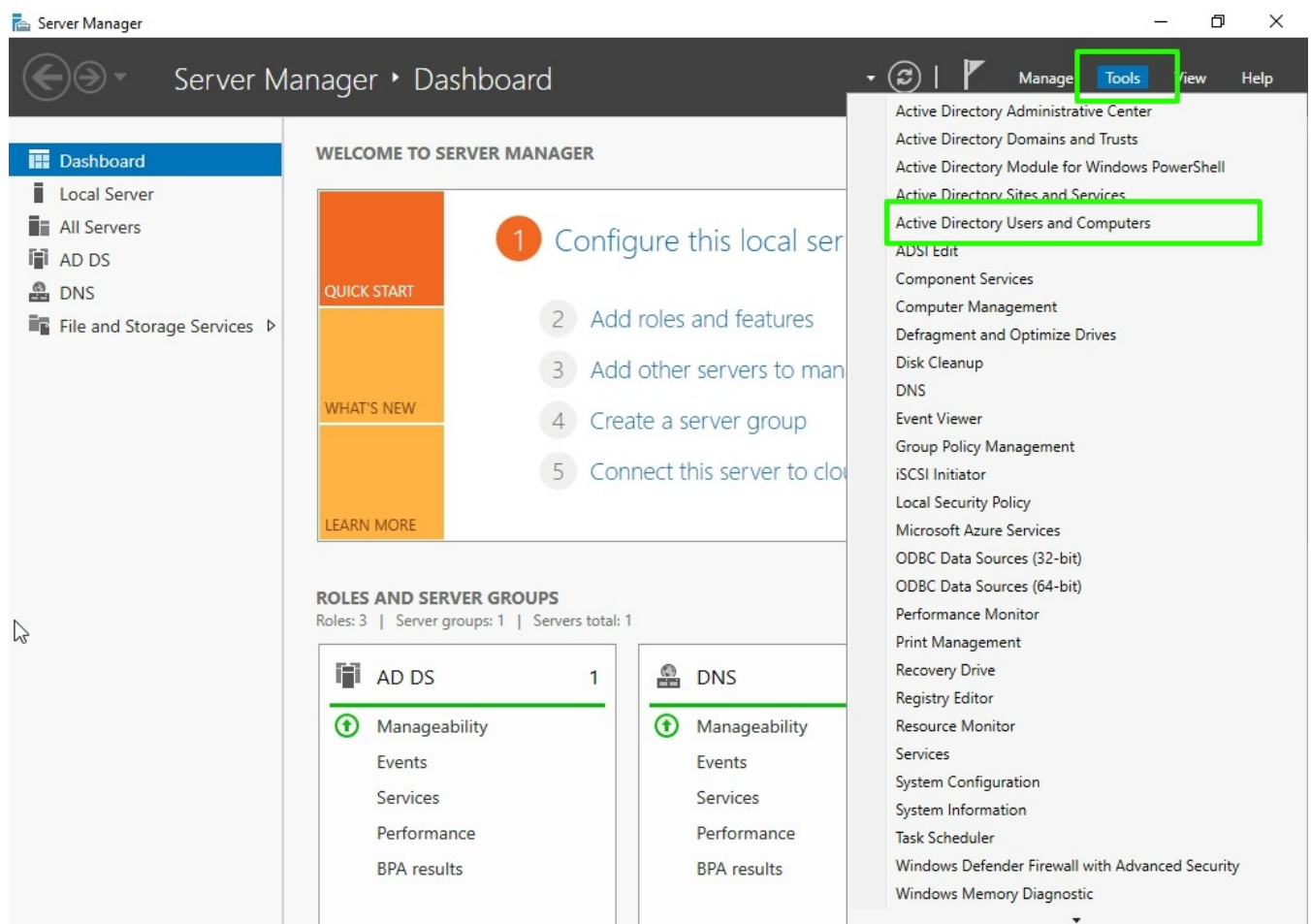
665 Nesvin KN April 17, 2025 [Productivity & Efficiency Features](#) 1001

How to add Active Directory as LDAP with non-administrator user?

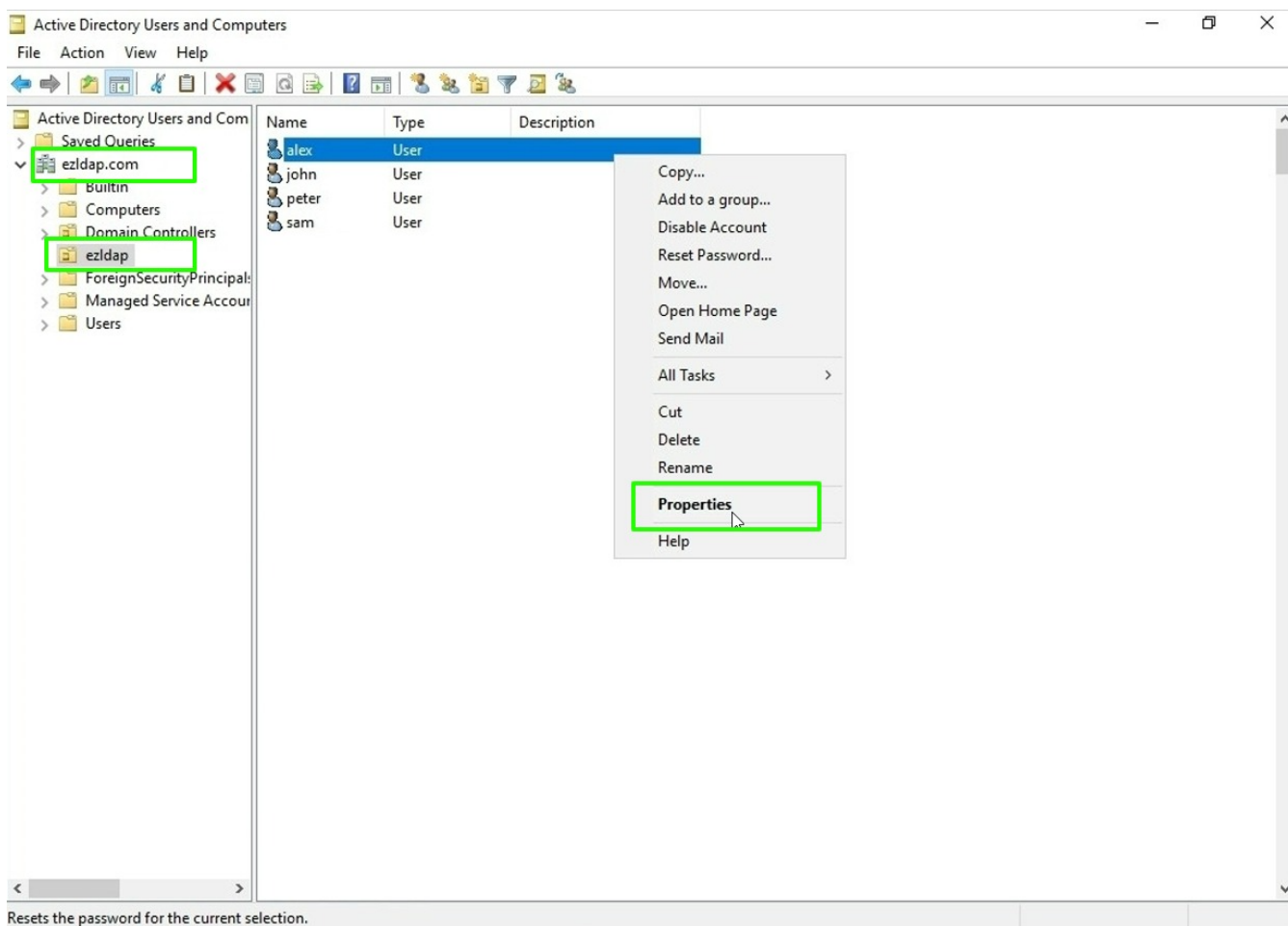
Overview: This article describes how to add Active Directory as LDAP in Ezeelogin using a non-administrator user

Assign administrative privileges to the user in Active Directory and this will allow the user to bind AD LDAP with Ezeelogin.

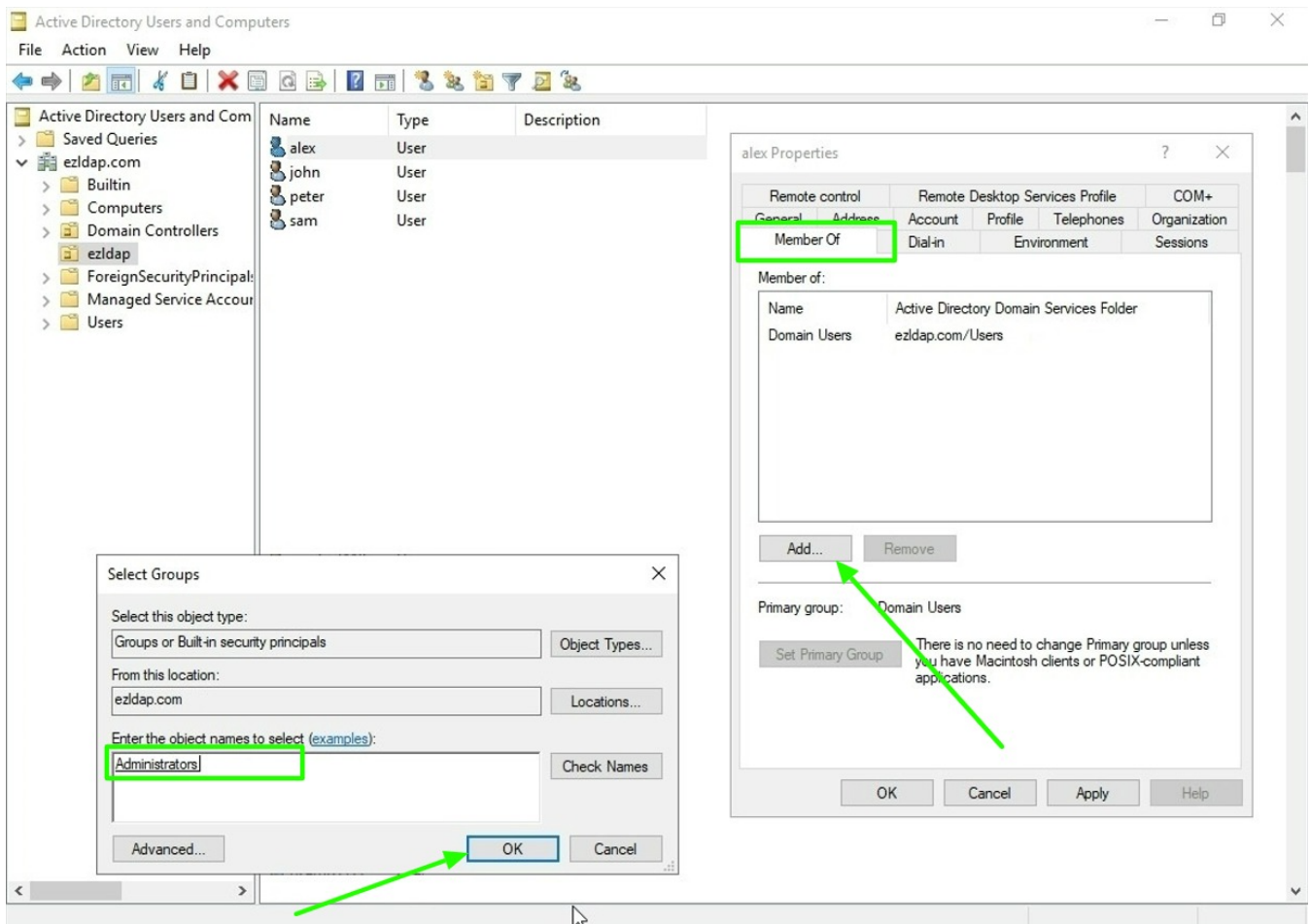
Step 1: Login to AD -> Server Manager -> Tools -> Active Directory Users and Computers.



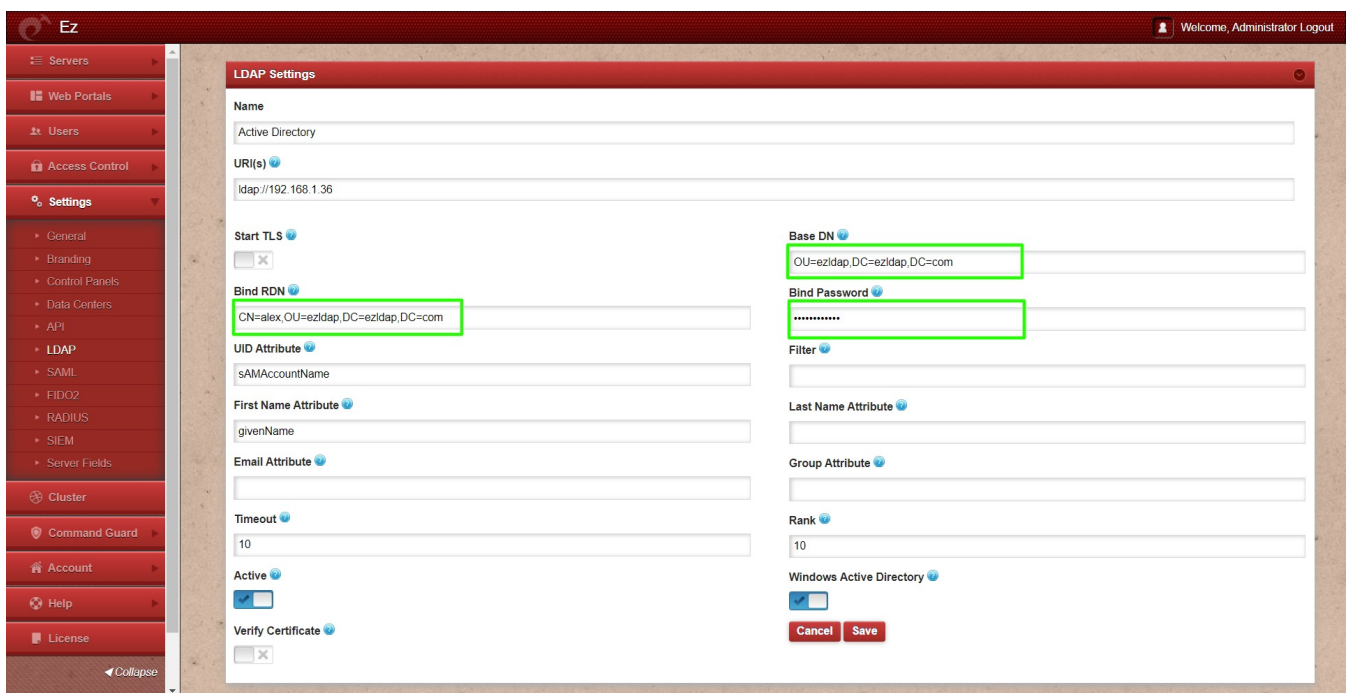
Step 2: In Active Directory Users and Computers navigate to the domain name-> right-click on the user -> properties.



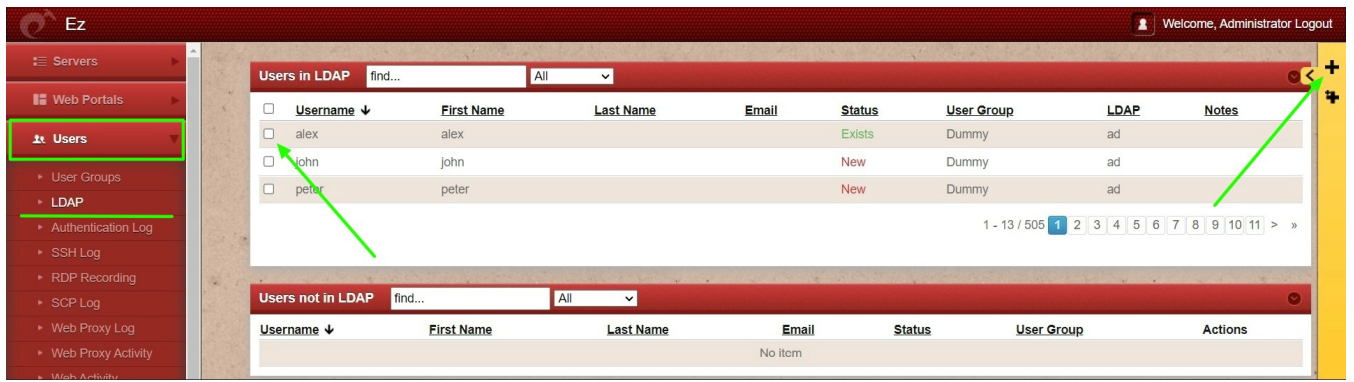
Step 3: Click on **Member Of** -> **Add** -> Enter **Administrator** in **object name field** -> click **Ok** and save the privilege.



Step 4: Add the LDAP setting with the new **user distinguish name** and password with the search base and save the settings.



Step 5: Click on the LDAP in the Users tab to list all the users from AD based on the search base specified in LDAP settings.



Related Articles:

[Install and Setup Active Directory](#)

[Integrate OpenLDAP / Windows Active Directory authentication in Ezeelogin](#)

[Authentication of Ezeelogin gateway users using Public keys fetched from Active Directory server](#)

Can we map existing user group in ldap to ezeelogin as ezeelogin user group?

Assigning user group for LDAP users?

Online URL: <https://www.ezeelogin.com/kb/article/add-ad-as-ldap-with-non-administrator-user-665.html>