

Could not load style files while accessing Ezeelogin GUI

360 Vishnupriya July 26, 2024 [Common Errors & Troubleshooting](#) 3552

Error: Image does not get loaded while accessing Ezeelogin GUI

Overview: This article describes how to resolve the Ezeelogin GUI login error caused by stylesheet and script loading issues due to Content Security Policy violations by updating the Ezeelogin configuration file and verifying the correct system folder path.

Ezeelogin

Username

Password

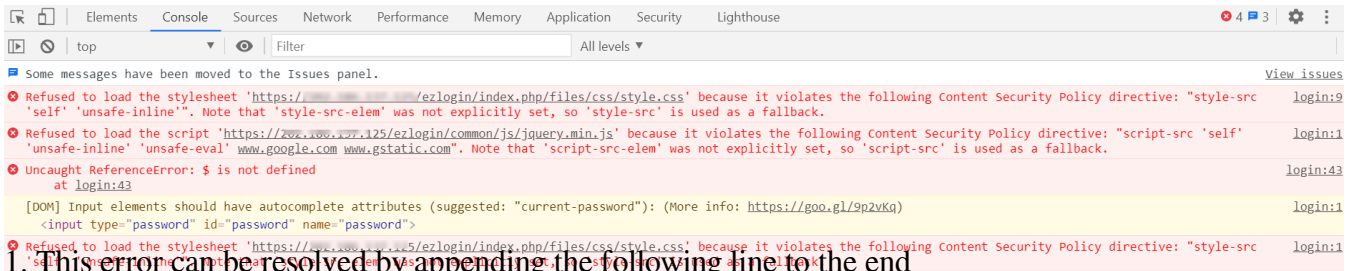
Login

Logged IP: XXXXXXXXXX

 Powered by
ezeelogin.com

- The above error occurs because the Ezeelogin page failed to load the style sheet i.e, the CSS(Cascading Style Sheets).

1. Refused to load the stylesheet, because it violates the following Content Security Police directive: "style-src 'self' 'unsafe-inline'".Note that 'style-sir-elm' was not explicitly set, so 'style-src' is used as a fallback.
2. Refused to load the script, because it violates the following content security policy directive: "script-src 'self' 'unsafe-inline' 'unsafe-eval'".
3. Uncaught ReferenceError: \$ is not defined.



1. This error can be resolved by appending the following line to the end of **/usr/local/etc/ezlogin/ez.conf** file:

```
root@localhost:~ vi /usr/local/etc/ezlogin/ez.conf
```

For example, refer to the following:

```
cver 2
system_folder /var/www/ezlogin/
www_folder /var/www/html/ezlogin/
uri_path /ezlogin/
force_https no
db_host localhost
db_port /var/lib/mysql/mysql.sock
db_name ezlogin_gxeqs
db_user ezlogin_rfv
db_pass TX/osUaN+eC9tGhEMLP4CkHJOeW6MTsItJtt8sqQftz5+rQpFaL4Di4Kyy1n
Y9s5crQFTd01Q+twGy/UaWi4KFLVjtAKeAQzJfWzcbXN6aY=
db_prefix bepdc_
cookie_encryption_key PR7ywZcWe56jZUJsyrAdDCHYHPPgu1TP+r0Bdi+1KdnQfE
rjpmFRYlNppccbK/Vu/HV5zBpgS1qfMae4Q71uxEad3QnV5hnntd5kgdUPe6o=
cookie_name yrpdwm
cookie_path /ezlogin/
admin_user admin
mysql_encrypt no
host_url http://your_domain_name
```

Note: If you have enabled [HTTPS](https://) you should add `host_url https://your_domain_name`

2. Ensure you have also provided the correct system folder under `/usr/local/etc/ezlogin/ez.conf`

Related Articles:

[Error while logging into GUI.](#)

[Access Error log and configuration files.](#)

Online URL:

<https://www.ezeelogin.com/kb/article/could-not-load-style-files-while-accessing-ezeelogin-gui-360.html>