

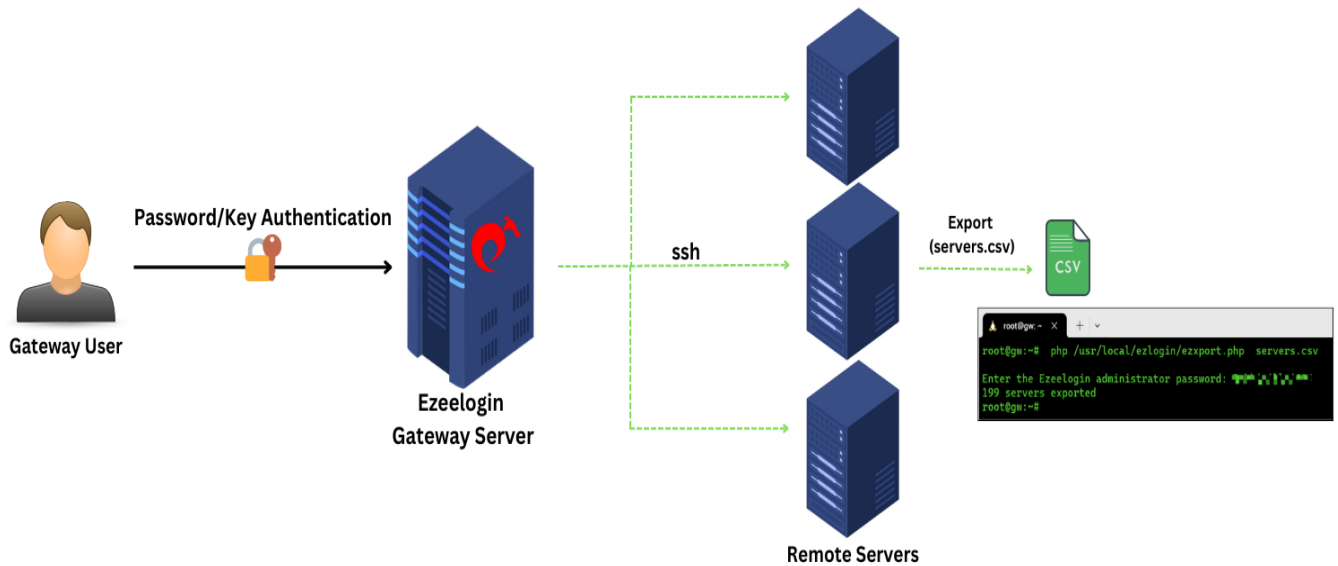
How to export servers ?

140 admin October 4, 2024 [Features & Functionalities](#), [Migration & Maintenance](#), [Productivity & Efficiency Features](#) 34872

How can we export servers?

Overview: This article provides steps to export the list of all servers and server details into a CSV file using an Ezeelogin script which subsequently can be imported back to the system.

Ezeelogin provides a convenient export script to export the list of all servers and server details into a CSV file for easy import and retrieval. Here's how you can export and import server configurations:



1. Export Servers

Step 1(A): Run the following export script on the gateway server. Specify an output file and a delimiter character. Afterward, you will be prompted to enter the Ezeelogin administrator password.

```
root@gateway:~# php /usr/local/ezlogin/ezxport.php <output file> [<delimiter>]
```

Example:

```
root@gateway:~# php /usr/local/ezlogin/ezxport.php servers.csv
```

```
Enter the Ezeelogin administrator password: *****
```

```
50 servers exported
```

Step 2: Make sure to enter the super admin password. The super admin is the admin user created during the installation. To retrieve the super admin's username, run the following command on the gateway server:

```
root@gateway:~# cat /usr/local/etc/ezlogin/ez.conf | grep -i admin_user
```

Refer to the example CSV file:

name	ip_address	group	password	ssh_port	rdp_port	ssh_user	keep_password	enable_ssh
production.ubuntu.server	192.168.43.201	production servers	AI17%%r Fb21CIxb &	22	3389	root	S	Y
production.debian.server	192.168.1.12	production servers	jRw0dHd\$ yrG9cxAP	22	3389	root	N	Y
production	192.168.4	production	37Nww\$A	22	3389	Administra	S	Y

.windows.s erver	3.7	servers	D8qFN^Bi O			tor		
---------------------	-----	---------	---------------	--	--	-----	--	--

This script does not check the license. So you can use it to retrieve your server details even if your license expires.

2. Import the exported CSV file to Ezeelogin

[Import servers from a CSV file into Ezeelogin](#)

Related Articles:

[Export server password in Excel file.](#)

[Common errors while importing server.](#)

Online URL: <https://www.ezeelogin.com/kb/article/how-to-export-servers-140.html>