

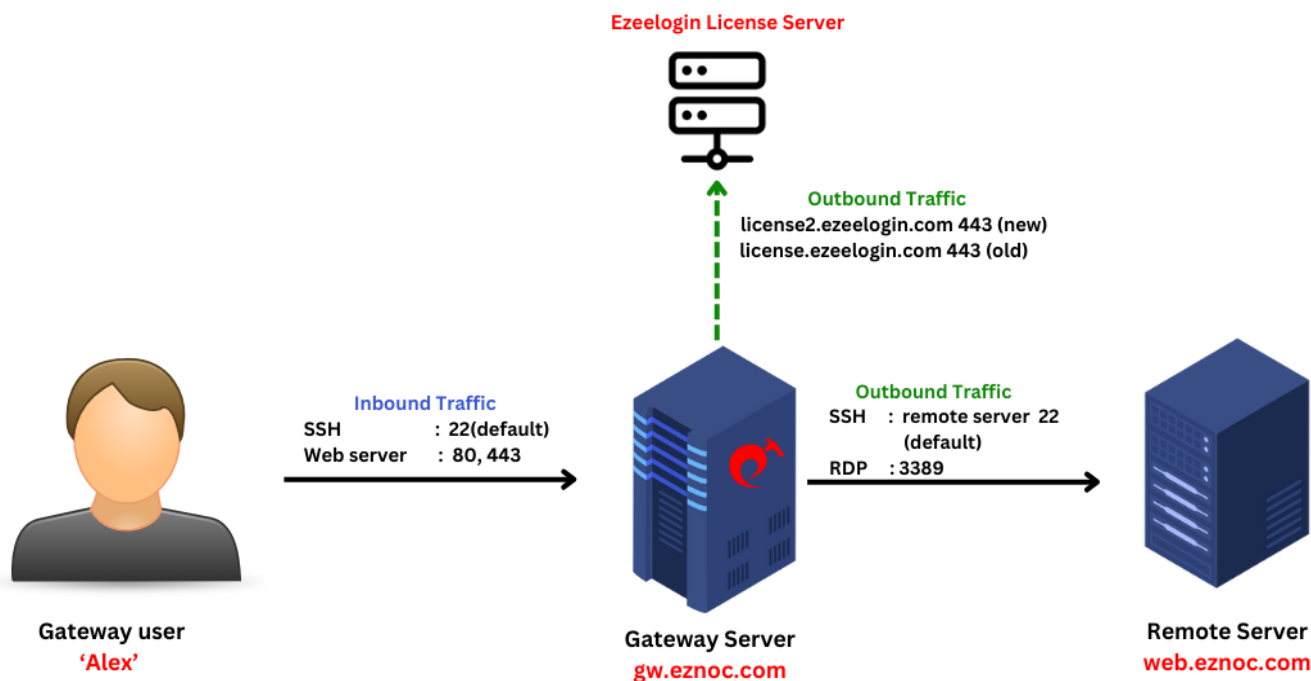
what port should i open on my server firewall to fetch ezeelogin license?

116 admin November 23, 2024 [Getting Started, Tweaks & Configuration](#) 8770

Port numbers used to function Ezeelogin

Overview: This article describes how to configure network ports in a gateway server, ensuring essential ports like HTTP, HTTPS, and SSH are open for inbound and outbound traffic, along with additional ports for specific Ezeelogin features.

Ezeelogin requires specific network ports to be open for seamless operation. This article outlines the necessary steps to configure these ports on your gateway server.



Required Ports

Ensure the following ports are open for both inbound and outbound traffic:

- **Inbound Ports:**

- HTTP (Web Server): 80
- HTTPS (Secure Web Server): 443
- SSH (Secure Shell): 22

- **Outbound Ports:**

- SSH (Secure Shell): 22
- license.ezeelogin.com: 443
- license2.ezeelogin.com: 443

All ports are customizable according to the requirement.

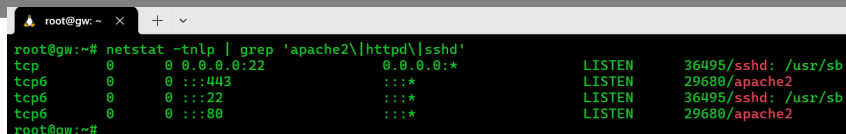
Step 1: Open Inbound Ports

Ensure inbound traffic can reach your SSH Jump server on the following ports:

- **HTTP (80), HTTPS (443), SSH (22)**

Example command to check if services are listening on these ports:

```
root@gateway:~# netstat -tnlp | grep 'apache2|httpd|sshd'
```



```
root@gw:~# netstat -tnlp | grep 'apache2|httpd|sshd'
tcp        0      0 0.0.0.0:22          0.0.0.0:*          LISTEN     36495/sshd: /usr/sb
tcp6       0      0 :::443            :::*                LISTEN     29680/apache2
tcp6       0      0 :::22            :::*                LISTEN     36495/sshd: /usr/sb
tcp6       0      0 :::80            :::*                LISTEN     29680/apache2
root@gw:~#
```

Adjust firewall rules on your gateway server to allow inbound connections to these ports.

Step 2: Allow Outbound Traffic

Permit outbound traffic from your SSH Jump server to license.ezeelogin.com and license2.ezeelogin.com on port 443 to fetch the license:

In your gateway server, allow outbound traffic on port 443 to license.ezeelogin.com and license2.ezeelogin.com to fetch the license.

```
root@gw:~# telnet license2.ezeelogin.com 443
Trying 35.244.178.132...
Connected to license2.ezeelogin.com.
Escape character is '^]'.
Connection closed by foreign host.
root@gw:~#

root@gw:~# telnet license.ezeelogin.com 443
Trying 5.78.114.255...
Connected to license.ezeelogin.com.
Escape character is '^]'.

```

Step 3: Allow both inbound and outbound traffic to your remote server on port 22.

```
Ez: Deltasystem x + v
root@gw:~# telnet -tnlp gw 22
telnet: Warning: -t ignored, no TN3270 support.
Trying 192.168.0.106...
Connected to gw.
Escape character is '^]'.
SSH-2.0-OpenSSH_8.9p1 Ubuntu-3ubuntu0.10

```

Additional Ports for Various Ezeelogin Features

1. **WebSSH** : 52222
2. **WebProxy** : 52666
3. **RdpProxy** : 22555

By following these steps, you ensure that your Gateway server is configured with the necessary network ports open for proper functionality. Customization of port settings should be done based on specific security and operational requirements of your environment.

Related Articles:

[configure custom SSH port in ezeelogin.](#)

Online URL:

<https://www.ezeelogin.com/kb/article/what-port-should-i-open-on-my-server-firewall-to-fetch-ezeelogin-license-116.html>