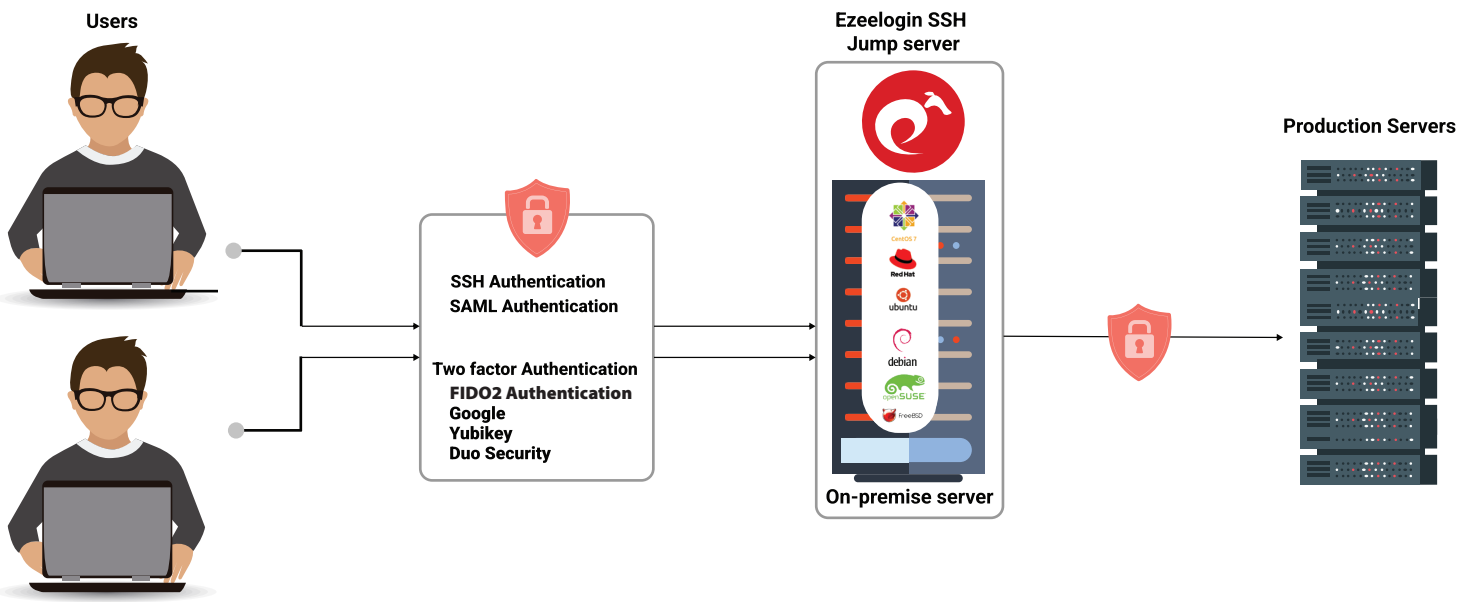


DEPLOY YOUR ON-PREMISE  
**SSH JUMP SERVER**  
QUICKLY

---



# Concept Diagram



Integrates with



## What is an Ezeelogin SSH Jump Server?

It is an SSH jump server solution designed to deploy an on-premise intermediate SSH gateway. All your staff, employees, and system administrators log in first via SSH to this intermediate server before accessing remote servers, routers, and network switches. The primary purpose of implementing the SSH gateway is to enhance security within your IT infrastructure and to meet various security compliance standards, including PCI DSS, ISO 27001, HIPPA, & more. Additionally, it significantly improves the efficiency of your staff and ensures better accountability.







# Key Features

- Multifactor authentication ( Google 2FA, YubiKey, DUO, & FIDO2 )
- Role Based Access Control ( RBAC )
- Privileged Access Management ( PAM )
- Password & SSH key management for better security & compliance
- Integration with Active Directory & LDAP
- SAML authentication ( Okta, OneLogin, AWS SSO, GSuite & Microsoft Azure SSO )
- Integration with SIEM solutions ( Splunk, Syslog )
- Audit logs and reporting for compliance requirements
- Cluster for high availability
- RDP access and recording of user sessions
- SSH rate limiting
- Command restriction

## Industries we serve

- Information Technology & Cloud Services
- Web Hosting & Data Center
- Banking & Fintech
- Telecommunications & ISPs
- Defence
- E-commerce
- Healthcare
- Education

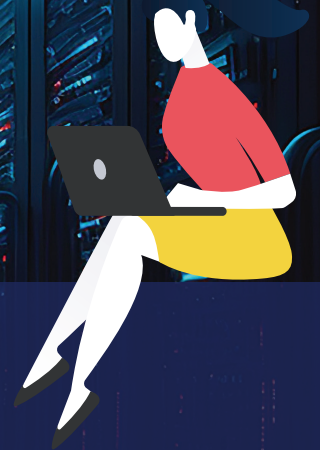
## Why do organizations choose **Ezeelogin** for their IT Infrastructure?

- Enhanced security
- Improved productivity
- Seamless integration
- Compliance and risk management
- User access control
- User-friendly interface
- Cost efficiency
- Trusted by over 1,000 happy users worldwide



## How does Ezeelogin help achieve Audit and Compliance requirements?

- Detailed report generation for annual audits
- Enforced multifactor authentication ( MFA ) for SSH
- Role-Based Access Control ( RBAC )
- Privileged Access Management ( PAM )
- Password management and rotation
- Record and track employee's SSH sessions
- Meet compliance requirements like PCI DSS, ISO27001, HIPPA, & more



Schedule a Free Demo!



## About Ezeelogin

- Founded in 2009
- 14+ years in the industry and going strong
- Securing SSH access to 1 million+ servers, routers and switches worldwide
- 100 + customers
- Customer presence in 25+ countries
- 50+ strong team members
- ISO 27001 & 9001 certified organization

**Admod Technologies Pvt Ltd**

Bldg 27-309, Maveli Nagar Cusat P.O, Kochi 682022

+91 9567867452 | +91 7994437452 | +91 484 2577452